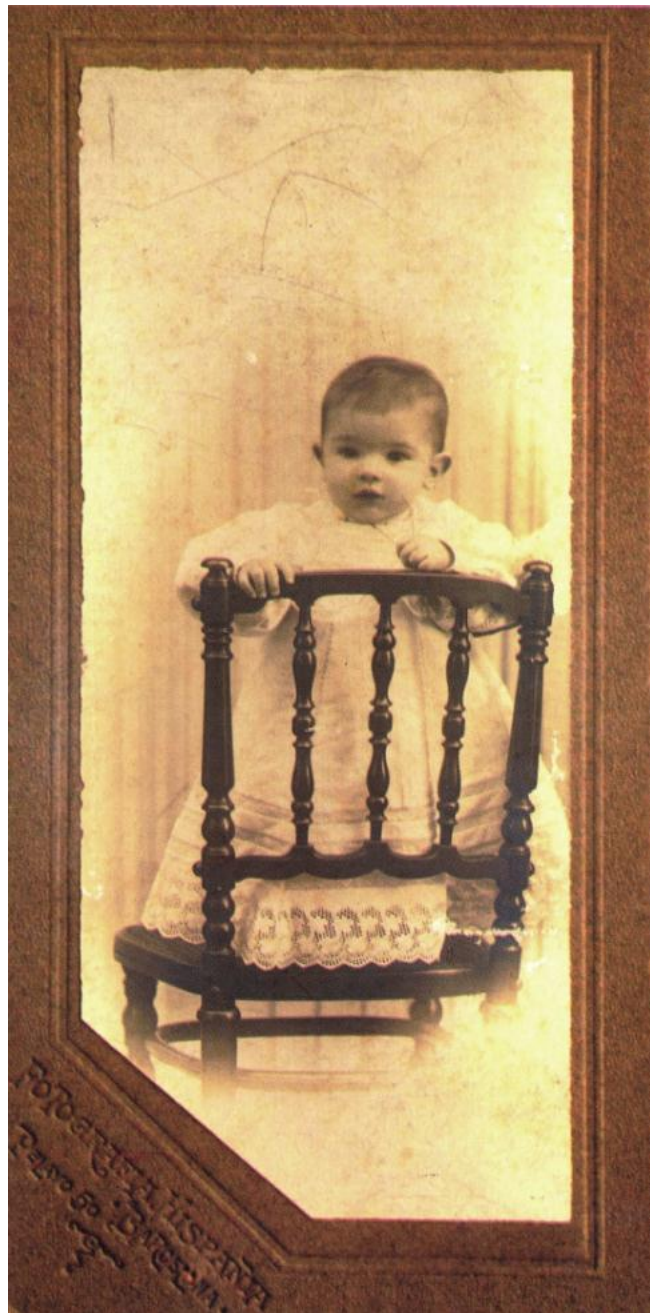


TOY MUSEUM OF CATALONIA

FIGUERES



Salvador Dalí (1904)

SALVADOR DALÍ

THE FIRST TWENTY YEARS

A FAMILY ALBUM

SALVADOR DALÍ

THE FIRST TWENTY YEARS

A FAMILY ALBUM



No evidence has been found that the Dalí-Domènech family actually kept a family album of portraits. However, a significant number of photographs have been found, clearly indicating that Salvador Dalí Domènech's family was one that enjoyed having its picture taken frequently. These include both professional portraits taken in studios such as Carreras or Bosch in Figueres and the Fotografia Hispania studio in Barcelona, but also numerous photos taken by family friends, a less common occurrence at the time.

Up until a few years ago, there was a small shed and storeroom in the Pitxot family home in Figueres on Muralla Street. This shed was found to be full of boxes of printed glass photographic plates that someone in the family had used. Salvador and his sister, Anna Maria, had their pictures taken in that same garden at different times when they were young. Another family photographer was Joan Xirau, Salvador's classmate at Ramon Muntaner High School and with whom he and other students founded the magazine, *Stadium*, in 1919. Joan took excellent pictures of both Anna Maria and Salvador in the artist's first studio found on the terrace of the family home on Plaza de la Palmera.

Stemming from our wish to recreate a family photo album of the Dalí-Domènech family during Salvador Dalí's first twenty years, the Toy Museum of Catalonia in Figueres (MJC/F) has consulted thirteen different archives, some of which are directly related to the family: Eulàlia Bas Dalí's archive, and those belonging to Emília Pomés (Anna Maria Dalí's archive), Felip Domènech and Joan Lleonart Bonet Domènech.

The story of this photographic chronicle consists of ten different sections: the parents, the brother, the sister, Salvador himself, the family, his studies, the first exhibits, the first editorial collaborations, and Figueres and Cadaqués to portray the city and the landscape in those years.

At the time, the Salvador Dalí everyone knew in Figueres and Cadaqués was a strong-willed and extravagant individual. He was the notary public of Figueres. In those early years, our artist was simply known as Salvador, the son of the notary. This explains why we only see the artist's name written simply and affectionately at the bottom of the pictures.

For many years now, the MJC/F has also had in its collection *Don Osito Marquina* (Marquina Teddy Bear Esquire) along with letters by renowned poet, Federico García Lorca, praising him; the teddy bear is as he was in his original home more than ninety years ago.

Lastly, there are also several original pieces from the artist's early period, and two 3-D lenticular portraits taken in Figueres have been found. They were discovered in 2004 but date from 1914; one is of Anna Maria and the other of Salvador, both making faces. With these we have prepared a special DVD directed by Vicenç Asensio and musical accompaniment by Pascal Comelade.

1. THE PARENTS

Salvador Dalí Cusí (Cadaqués 1872 . Figueres 1950)

Felipa Domènech Ferrès (Barcelona 1874 . Figueres 1921)

Among various photographic documents, there are several photos from 1900 in which we can see Salvador and Felipa when they were dating and later on their wedding day.

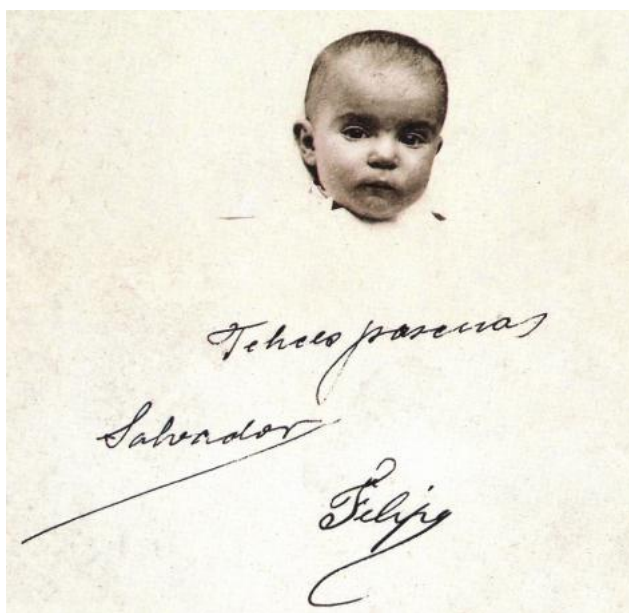


Felipa Domènech Ferrès and Salvador Dalí Cusí on their wedding day (1900)

2. THE BROTHER

Salvador Dalí Domènech (Figueres 1901 . 1903)

There are numerous photos of the first Salvador who died at a very young age. The artist would later be named after his deceased sibling, a fact which would mark him his entire life.



Salvador Dalí Domènech (1902)

3. THE SISTER

Anna Maria Dalí Domènech (Figueres 1908 . Cadaqués 1990)

Four years younger than Salvador the artist, there are numerous pictures of her with her brother and with the rest of the family. Worth highlighting is a 1926 picture of her in which we can also see Salvador and *Don Osito Marquina*, an item she bequeathed to our Museum.



Anna Maria Dalí in Cadaqués (1925)

4. SALVADOR

Salvador Dalí Domènech (Figueres 1904 . 1989)

There are many photos of Salvador depicting the artist at different points in his childhood and early youth, with the family, in school, etc. There is also an announcement of Salvador's birth in 1904.



Salvador and his cousin, Montserrat Dalí (1905)



J. Carreras fot. S. Sortella, 5 y 7 Figueras

Salvador in fancy dress (1906)



Salvador camping in Cap de Creus (1921)

5. SALVADOR AND HIS FAMILY

There are many pictures of Salvador with his family in Figueres and Cadaqués, including Salvador and his unde Anselm, with his cousin Montserrat, the Dalí-Domènech and Dalí-Pasqual families, with his aunt Caterina, with two nannies, with his grandmother Anna, etc.



Dalí Family in Cadaqués. From left to right: a nanny, the parents, Salvador, aunt Caterina, Anna Maria and grandmother Anna. In the boat, Beti (1910)

6. STUDIES

Schools Salvador attended

There are photos of Salvador with his classmates in the municipal nursery school, at the Marista religious school, the *Colegio Hispanofrancés*, Figueres High School, and the San Fernando Academy in Madrid, etc. We can also see the artist with his teacher, Esteve Traiter, during the *Festa dels Aucells* (Bird Festival), and another of Juan Núñez, a teacher at Salvador's high school and art school. Worth highlighting are the record of Salvador's marks at the Figueres High School and his student ID at the San Fernando Academy in Madrid.

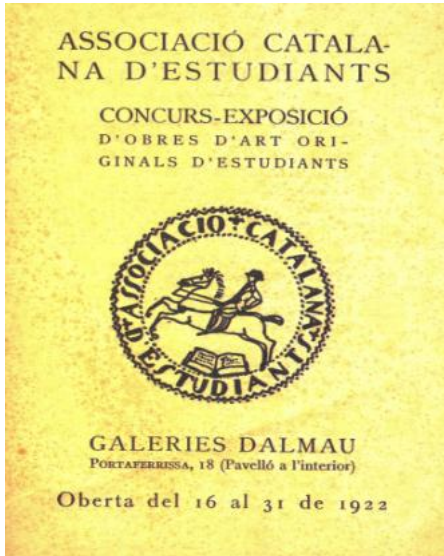


Figueres High School. Salvador is the first on the top row from the left (1916)

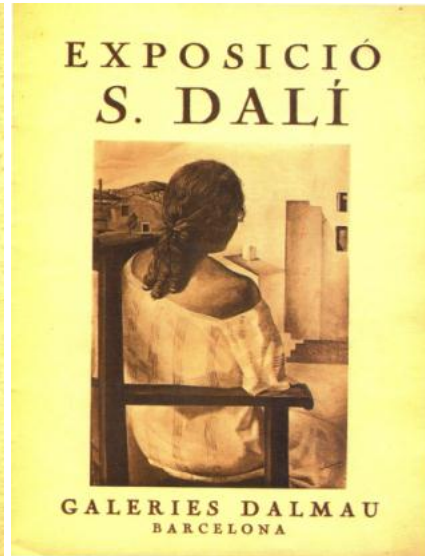
7. THE FIRST EXHIBITS

Catalogues, conferences, etc.

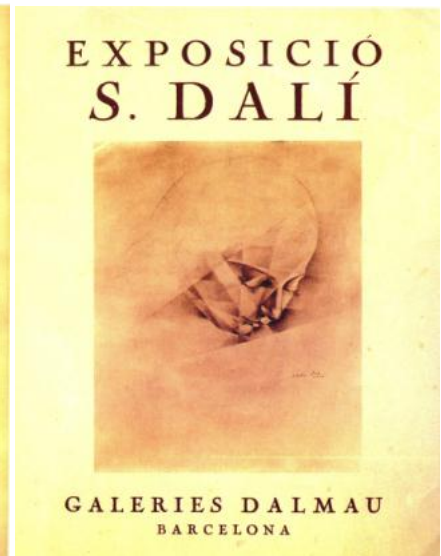
There are noteworthy catalogues of exhibits from 1925, 1926 and 1927, and from an exhibition organised by the *Associació Catalana d'Estudiants* (Catalan Student Association) held in Galeries Dalmau in Barcelona. There are also catalogues from other local artists' exhibits and the *Asociación Provincial de Bellas Artes* (Fine Arts Provincial Association) held in the Menestral Figuerenc Casino. We can also see an invitation for a speech Dalí gave there in 1928.



(1922)



(1925)



(1926 – 1927)

8. THE FIRST EDITORIAL COLLABORATIONS

Posters, book covers and magazines

In this section we highlight a joke by the artist appearing in the *Calendari de Patufet* in 1919, various issues of the magazine, *Studium* (which the artist prepared along with other high school classmates), programmes and posters for the *Fires i Festes de la Santa Creu* (Santa Creu Fairs and Festivals), book covers, including for *Les bruixes de Llers* and *L'onde Vicents*, and a study for the cover of the magazine, *Empordà Federal*, etc.

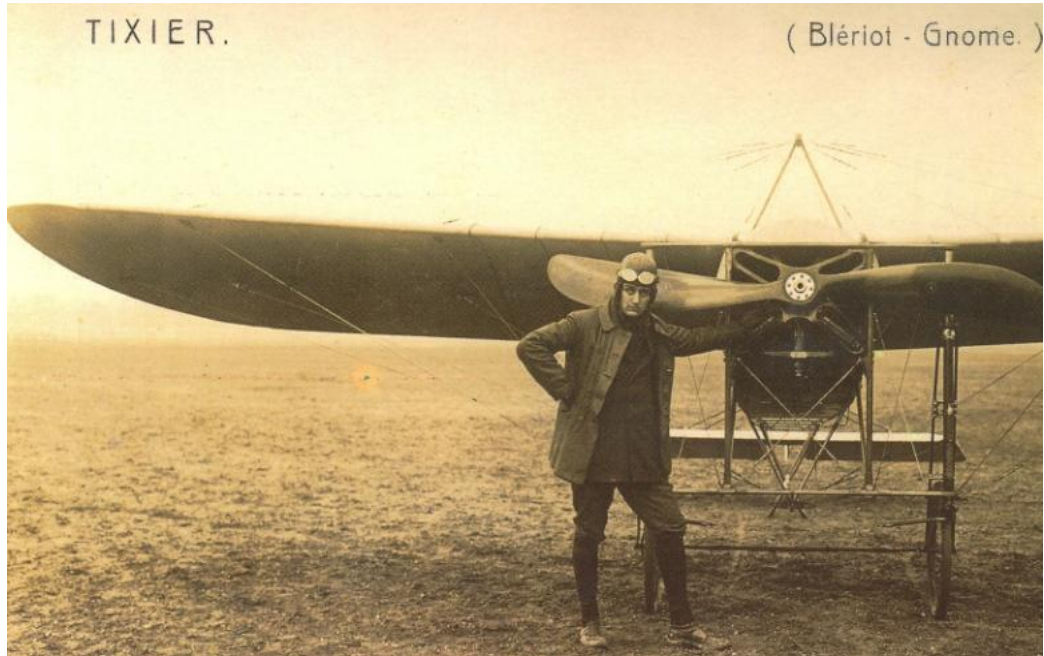


Studium / Figueres High School Magazine (1919)

9. FIGUERES

Remembering the city in those years

It is interesting to see the city of Figueres vitality and cultural effervescence during Salvador's childhood and youth. There are photos of the homes where the artist lived and of the streets Calle Monturiol, Calle Ample, Plaza de la Palmera, La Rambla, as well as the Municipal Slaughterhouse, the church, Figueres High School, the Nostra Senyora de Lourdes church, etc. There are also pictures of various activities taking place around the city, including the opera, *Oedipus Rex*, the aviator, Tixier, with his airplane, and a football match on the sports pitch.



The aviator, Henri Tixier, with his airplane, Blériot (1912)

10. CADAQUÉS

Revisiting the seascape of yesteryear

There are photos of the town of Cadaqués in those years, both general as well as of the Dalí family: Cadaqués Bay, the Es Llané beach, the port, the Sa Morera rock, the Playa Grande promenade, Portlligat, Cap de Creus, etc.



Cadaqués fishermen in their boat (1910)

DON OSITO MARQUINA

Don Osito Marquina is a soft little body bears the imprints of **Anna Maria Dalí** and two of the 20th century's most universal artists, **Federico García Lorca** and **Salvador Dalí**.

The happy circumstance of having successfully travelled through time intact and surviving the childhood of his owners, allows us to today admire this unique teddy bear in the **Toy Museum of Catalonia** in Figueres.

Antonina Rodrigo
Summer, 1987



Don Osito Marquina is cute, super cute.+

Federico García Lorca
(1928)

In addition to the photo in which we see the teddy bear along with Salvador and Anna Maria, we should also mention a drawing in ink by the artist of the Dalí home in Es Llané (Cadaqués). In this work we can see Don Osito Marquina peeking out of the right upstairs window. In addition, the MJC/F preserves two handwritten letters by the poet and playwright, Federico García Lorca, praising the bear.



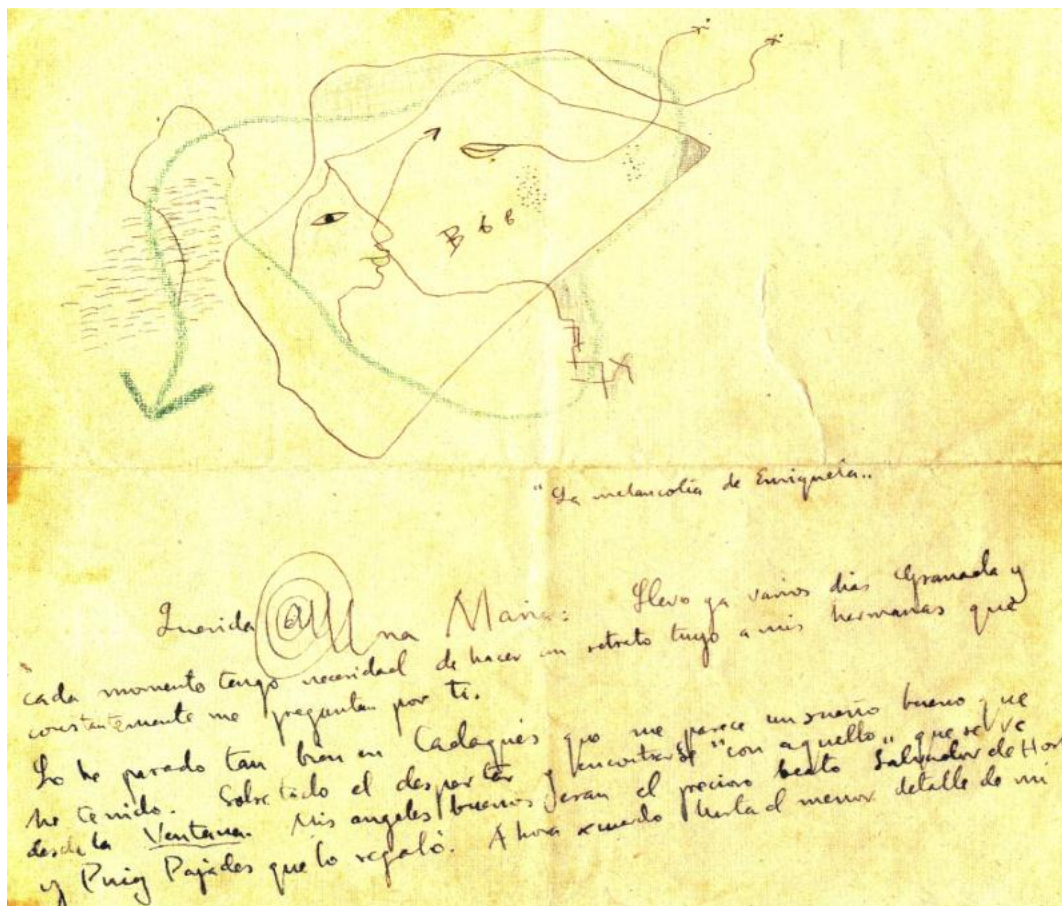
Salvador, Anna Maria and Don Osito Marquina (1926)



Dalí Home in Es Lané in Cadaqués, ink drawing by Dalí (1918)
 We can see Don Osito Marquina in the right upstairs window.
 © Salvador Dalí, Gala-Salvador Dalí Foundation, VEGAP

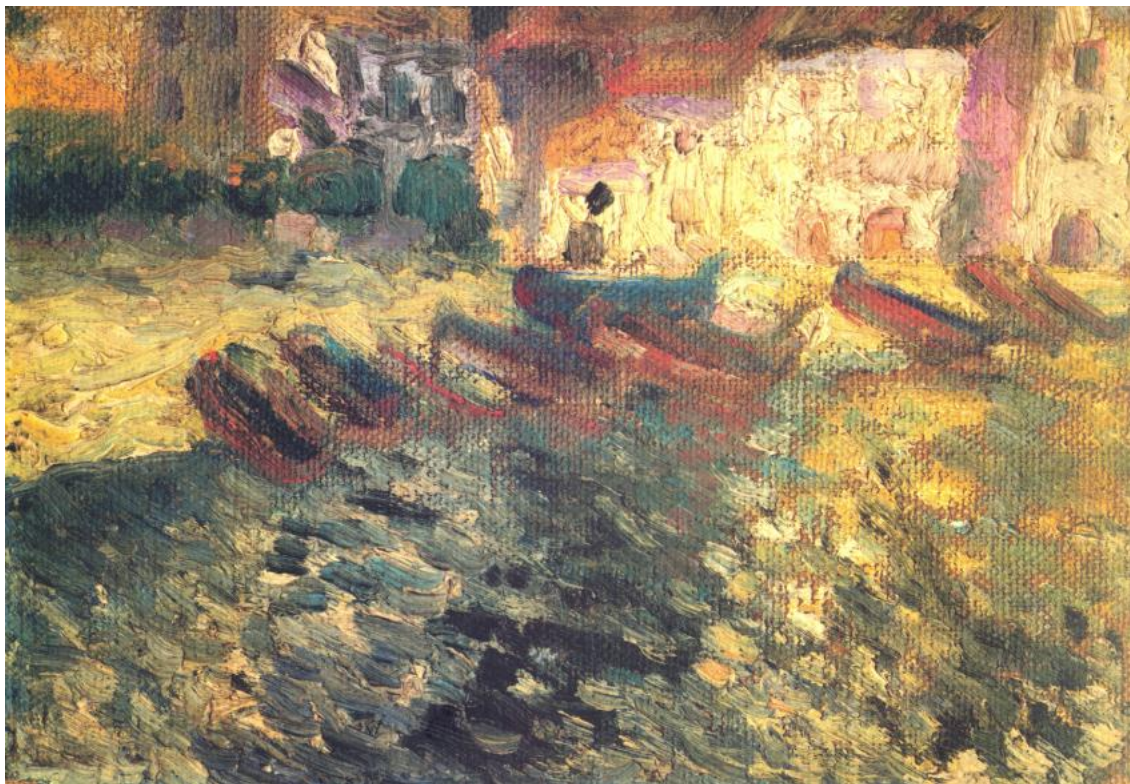
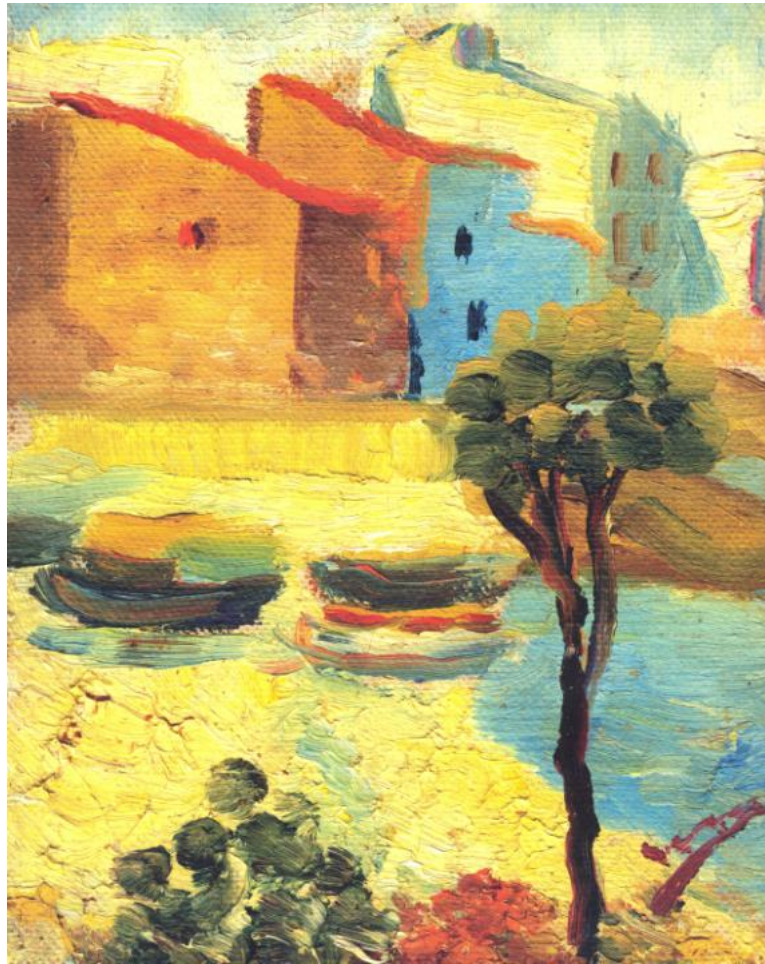


Anna Maria Dalí holding the teddy bear Federico García Lorca dubbed *Don Osito Marquina* (1927)

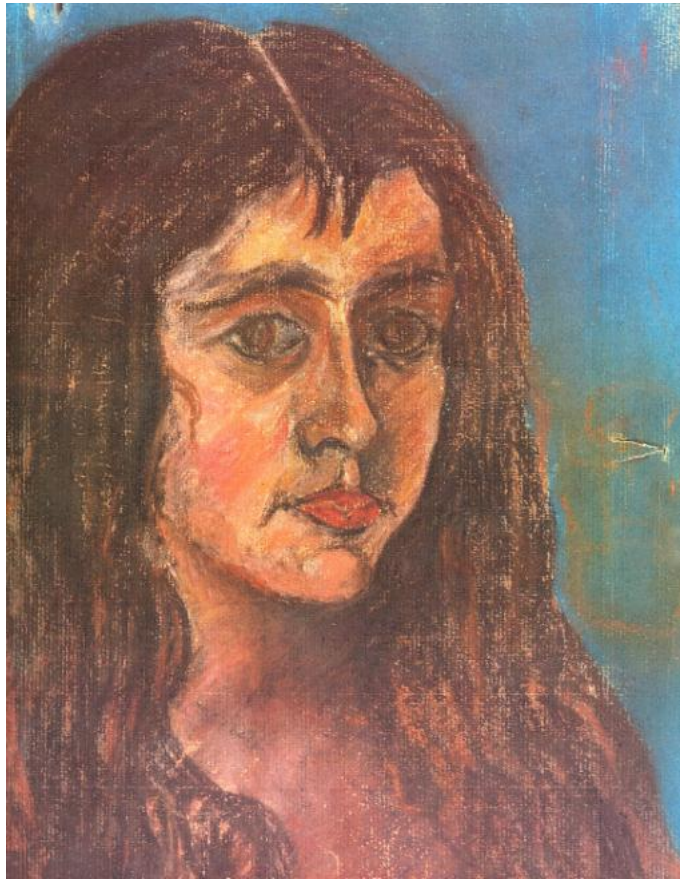


Handwritten letter by Federico García Lorca to Anna Maria Dalí in which the poet talks about *Don Osito Marquina* (1927)

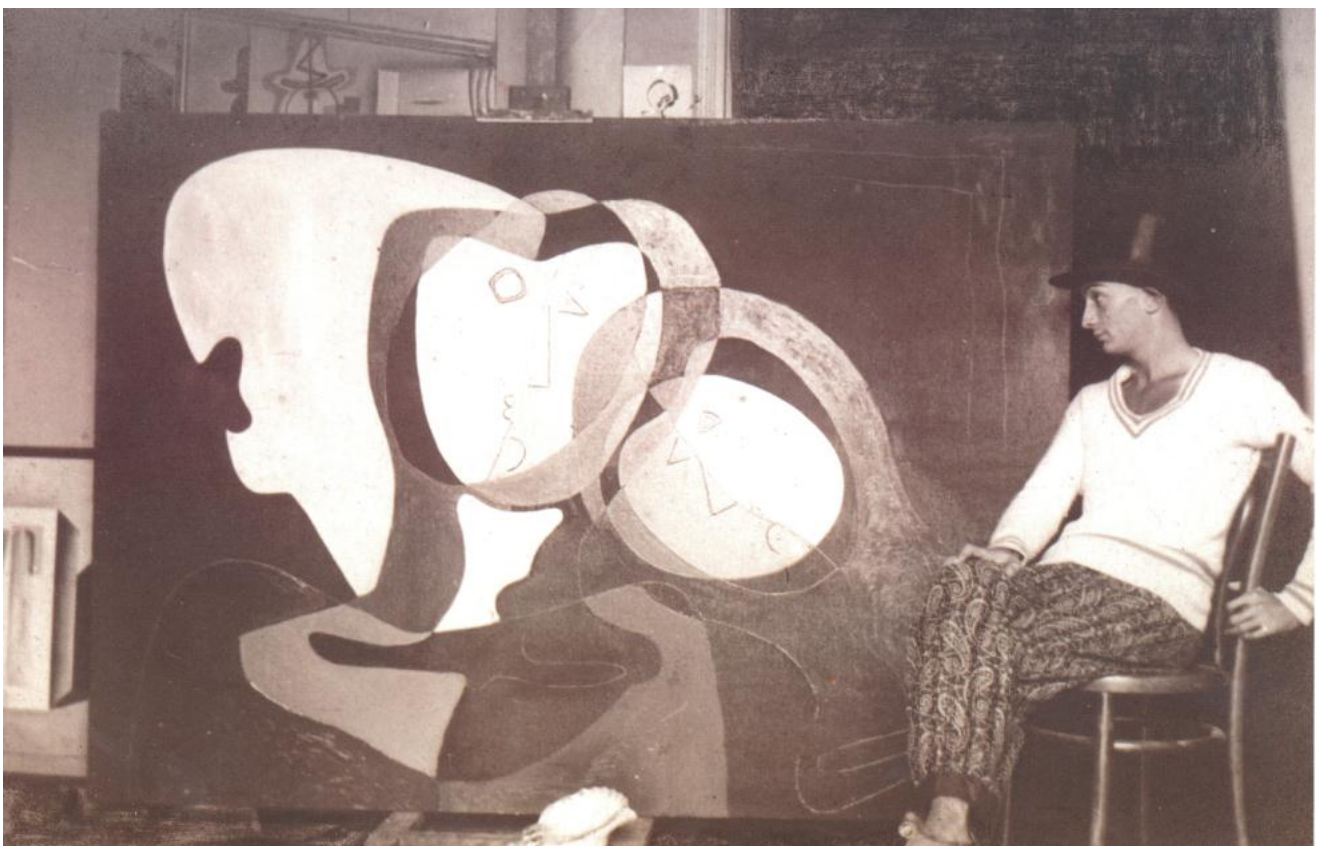
Bequeathed by Anna Maria Dalí to the Toy Museum of Catalonia Documentation Centre



Oil paintings on two sides of a single canvas: *Platja d'Es Llané* and *Port Dogué* (1919)
 © Salvador Dalí, Gala-Salvador Dalí Foundation, VEGAP



Pastel: *Retrat de noia* (1920)
© Salvador Dalí, Gala-Salvador Dalí Foundation, VEGAP



Salvador Dalí in his Figueres studio (1926) / Photo by Joan Xirau

Above we mentioned the 3-D lenticular portraits taken in Figueres in 1914. In these two photos, one of Salvador and the other of Anna Maria, we can see both children making faces. The MJC/F has prepared a DVD to actually see them move. The DVD is directed by Vicenç Asensio with music by Pascal Comelade.



-D lenticular portraits of Salvador and Anna Maria (1914)
Bequeathed by Eulàlia Bas Dalí and Emília Pomés to the MJC/F Documentation Centre

SALVADOR DALÍ

THE FIRST TWENTY YEARS

A CHRONICLE OF PERSONAL MEMORIES

The Toy Museum of Catalonia Foundation would like to thank the following for their contributions:

Eulàlia Bas Dalí Archive
Joan Leonart Bonet Domènech Archive
Felip Domènech Archive
Josep Fajol Archive
Francesc Guillaumet Archive
J.M.J.R. Archive
Institut Ramon Muntaner Archive
Emília Pomés Archive
Maria Xirau Archive
Gala-Salvador Dalí Foundation
MJC/F Documentation Centre

DVD

Toy Museum of Catalonia
Directed by: Vicenç Asensio
Music by: Pascal Comelade

Don Osito Marquina texts:
Antonina Rodrigo and Federico García Lorca

Linguistic consulting:
Anna Joan Casademont
Camil·la Massot Kleiner



The Toy Museum of Catalonia/Figueres Foundation receives support from:

Spanish Ministry of Culture ◇ Government of Catalonia ◇ Girona Provincial Council
Alt Empordà Area Council ◇ Figueres Town Hall